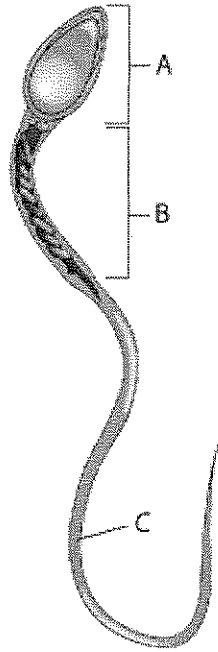


## reproduction practice test

### Multiple Choice

*Identify the choice that best completes the statement or answers the question.*



**Figure 34–2**

- \_\_\_\_\_ 1. In Figure 34–2, which part of the sperm cell contains mitochondria necessary to power its trip through the reproductive system?
- A
  - B
  - C
  - all of the above
- \_\_\_\_\_ 2. Which part of the sperm cell shown in Figure 34–2 contains enzymes vital to fertilization?
- A
  - B
  - C
  - all of the above

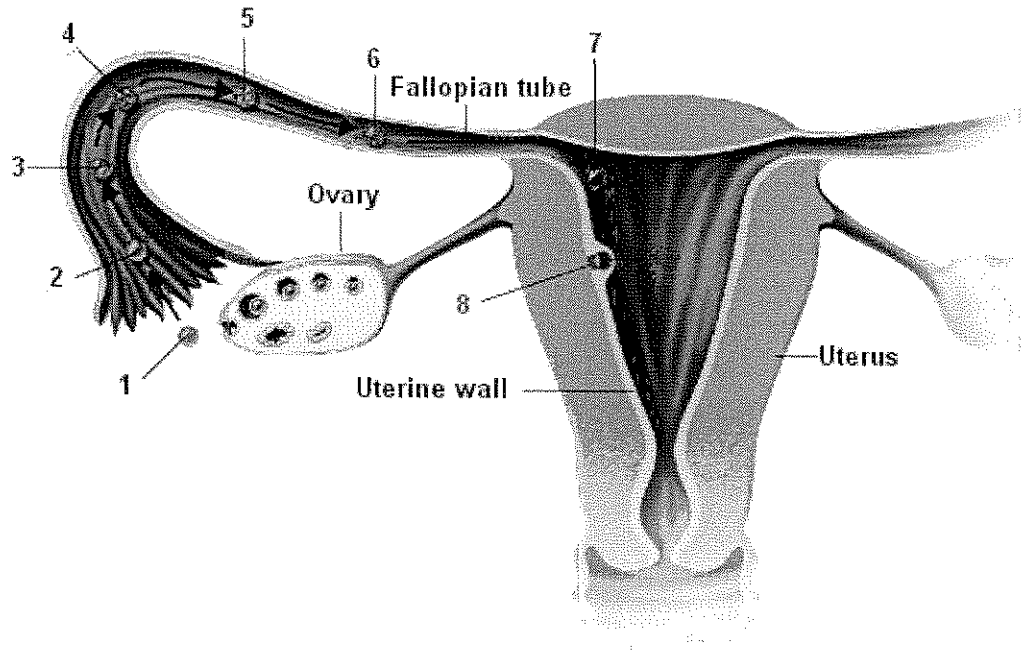


Figure 34-3

- \_\_\_\_\_ 3. What is occurring in step 1 in Figure 34-3?
- fertilization
  - formation of a zygote
  - ovulation
  - formation of a blastocyst
- \_\_\_\_\_ 4. In which structure in Figure 34-3 is fertilization occurring?
- ovary
  - Fallopian tube
  - uterus
  - uterine wall
- \_\_\_\_\_ 5. Which of the following is a function of the placenta?
- mixing the blood of the mother and the fetus
  - protecting the fetus from drugs, such as alcohol, in the mother's body
  - providing nutrients to the fetus
  - cushioning and protecting the fetus
- \_\_\_\_\_ 6. Read the following statements that describe childbirth. What is the correct order in which they occur?
- 1) Contractions force the baby out through the vagina.
  - 2) Amniotic sac breaks and the fluid it contains rushes into the vagina.
  - 3) The umbilical cord is clamped and cut.
  - 4) The placenta and the amniotic sac are expelled from the uterus.
- 4,2,1,3
  - 2,1,3,4
  - 1,3,2,4
  - 3,2,4,1

Name: \_\_\_\_\_

ID: A

- \_\_\_\_\_ 7. A blastula is
- a. a digestive organ.
  - b. the innermost germ layer.
  - c. a layer of embryological tissue.
  - d. a hollow ball of cells in an embryo.
- \_\_\_\_\_ 8. Which of the following is a fertilized egg?
- a. a blastula
  - b. a zygote
  - c. a blastopore
  - d. a pseudocoelom

## reproduction practice test

### Answer Section

#### MULTIPLE CHOICE

1. ANS: B                      PTS: 1                      DIF: L2                      REF: p. 990  
OBJ: 34.3.2 Name and discuss the structures of the male reproductive system.  
STA: SC.912.L.14.33                      TOP: Foundation Edition  
MSC: knowledge
2. ANS: A                      PTS: 1                      DIF: L1                      REF: p. 990  
OBJ: 34.3.2 Name and discuss the structures of the male reproductive system.  
STA: SC.912.L.14.33                      TOP: Foundation Edition  
MSC: comprehension
3. ANS: C                      PTS: 1                      DIF: L1                      REF: p. 996  
OBJ: 34.4.1 Describe fertilization and the early stages of development.  
STA: SC.912.L.14.33                      TOP: Foundation Edition  
MSC: comprehension
4. ANS: B                      PTS: 1                      DIF: L1                      REF: p. 996  
OBJ: 34.4.1 Describe fertilization and the early stages of development.  
STA: SC.912.L.14.33                      TOP: Foundation Edition  
MSC: comprehension
5. ANS: C                      PTS: 1                      DIF: L1                      REF: p. 998 | p. 1001  
OBJ: 34.4.1 Describe fertilization and the early stages of development.  
STA: SC.912.L.14.33                      TOP: Foundation Edition  
MSC: comprehension
6. ANS: B                      PTS: 1                      DIF: L1                      REF: p. 1000  
OBJ: 34.4.2 Identify the major events of later stages of development.  
STA: SC.912.L.14.41                      TOP: Foundation Edition  
MSC: synthesis
7. ANS: D                      PTS: 1                      DIF: L1                      REF: p. 739  
OBJ: 25.2.1 Discuss some trends in animal evolution.                      STA: SC.912.L.15.1  
TOP: Foundation Edition                      MSC: knowledge
8. ANS: B                      PTS: 1                      DIF: L2                      REF: p. 739  
OBJ: 25.2.1 Discuss some trends in animal evolution.                      STA: SC.912.L.15.1  
TOP: Foundation Edition                      MSC: application